



City of Rohnert Park  
Public Works Department

DATE: SEPTEMBER 5, 2025  
TO: ALL PLANHOLDERS  
SUBJECT: CITY OF ROHNERT PARK  
BENICIA PARK CONCESSION STAND RENOVATION  
PROJECT  
NO. OF PAGES: 13

---

### ADDENDUM NO. 1

This package provides an addendum to the Project Contract Documents. This Addendum shall become part of the Contract and all provisions of the Contract shall apply thereto.

Bidders shall acknowledge receipt of this Addendum by signing the acknowledgement located in the Bid Proposal documents, under "Addendum Acknowledgement." Failure to do so may cause your bid to become non-responsive and subject to rejection.

**NOTE: BID OPENING DATE HAS BEEN EXTENDED TO WEDNESDAY, SEPTEMBER 10, 2025 AT 2:00 P.M.**

### **BID PACKET AND BID DOCUMENTS**

#### **I. PART 1 – BID DOCUMENTS**

**Front Cover of Bid Documents, revise as follows:**

BID DUE DATE: ~~MONDAY, SEPTEMBER 4, 2025~~ **WEDNESDAY, SEPTEMBER 10, 2025**

**Page 1-1, First Paragraph, First and Second Sentences, revise as follows:**

Notice is hereby given that on ~~MONDAY, SEPTEMBER 8, 2025~~ **WEDNESDAY, SEPTEMBER 10, 2025**, at 2:00:00 PM at 130 Avram Avenue, Rohnert Park, California, the City of Rohnert Park will receive and open sealed bids for the BENICIA PARK CONCESSION STAND RENOVATION PROJECT ("Project"). Sealed bids shall be dropped off in the secured box to the right of the main doors in front of City Hall before 2:00:00 PM on ~~Monday, September 8, 2025~~ **Wednesday, September 10, 2025**.

**Page 1-3, First Paragraph, Third Sentence, revise as follows:**

Said sealed bids shall be dropped off in the secured box to the right of main doors in front of City Hall located at 130 Avram Avenue, Rohnert Park, California before 2:00 PM on ~~MONDAY, SEPTEMBER 8, 2025~~ **WEDNESDAY, SEPTEMBER 10, 2025**.

## **II. PART 4 – TECHNICAL SPECIFICATIONS**

**Revise the following Sections as summarized below and provided in the attached:**

1. SECTION 08 33 13 COILING COUNTER DOORS, 2.2 OVERHEAD COILING STEEL COUNTER DOORS, remove Galvanized Steel Counter Doors (closes to floor) 650 Series, 651 Series remains.
2. SECTION 08 71 00 DOOR HARDWARE, hardware schedule updated.

## **II. PART 6 – DRAWINGS**

Replace the following plan sheets as part of Benicia Park Concession Building Fire Replacement plan set in their entirety with the attached. Note: changes clouded as Delta 1 and summarized as below:

### **Sheet A2.05**

- Updated door hardware to reflect Push Rail and Lever Hardware
- Door Schedule has been updated from Hardware Set 2 to Hardware Set 1

### **Sheet A3.00**

- Dry rot repairs
- Remove and replace fire damaged vent covers
- Remove metal plates and repair siding

### **Sheet A3.01**

- Updated door hardware to reflect Push Rail and Lever Hardware

### **Sheet A8.00**

- Detail 1, updated door hardware to reflect Push Rail and Lever Hardware

## **INFORMATION**

The City of Rohnert Park has received questions in regards to the construction phase of the project and would like to provide clarification. Please note the following additional information and clarifications to questions.

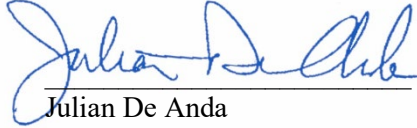
1. Question: Spec section 083313 Coiling Counter Doors has 3 models listed: 083313 2.2 A lists 650 services, 083313 2.2 B lists model 651 series, & 083313 2.3 A lists model 657 series. Please confirm which model is to be bid.  
*Response: Model 651 to be used. Please find updated Specifications attached for the model to be bid.*
2. Question: The concession door on Sheet A2.05 is called out to have panic hardware, closer, and fire rating per the door and frame schedule. However, the elevations on Sheets A2.05, A3.01 and A8.00. Indicate cylindrical locks. Additionally, the door is noted to have hardware from hardware set 2, but the specifications do not include a hardware set 2. Please confirm the correct hardware requirements for this door.

*Response: Please find attached the updated drawings and Specifications for Hardware Set details.*

3. Question: Are contractors responsible for clearing out all of the fire ridden stuff inside?

*Response: Yes, the Contractor is responsible for removing all debris, including disposal of the existing fridge and freezer inside the building to complete work.*

Addendum No. 1 approved by:



Julian De Anda  
Acting City Engineer

9-5-25

\_\_\_\_\_  
Date

- B. Manufacturer's 2 year limited warranty for PowderGuard Premium Powder Coat Finish.
- C. Manufacturer's 4 year limited warranty for PowderGuard Zinc Powder Coat Finish.
- D. Manufacturer's 5 year limited warranty for PowderGuard Weathered Powder Coat Finish applied to complete door system.

## PART 2 PRODUCTS

### 2.1 MANUFACTURERS

- A. Basis of Design: Overhead Door Corporation, 2501 S. State Hwy. 121, Suite 200, Lewisville, TX 75067. ASD. Tel. Toll Free: (800) 275-3290. Phone: (469) 549-7100. Fax: (972) 906-1499. Web Site: [www.overheaddoor.com](http://www.overheaddoor.com). E-mail: info@overheaddoor.com.
- B. Substitutions: Products meeting the performance standards of the basis of design products will be considered in accordance with provisions of Section 01 33 24.

### 2.2 OVERHEAD COILING STEEL COUNTER DOORS

- A. ~~Galvanized Steel Counter Doors (closes to floor) 650 Series:~~
  - 1. ~~Wall Mounting Condition:~~
    - a. ~~Face-of-wall mounting.~~
  - 2. ~~Curtain: Interlocking slats, Type E-158 fabricated of 22 gauge galvanized steel. Endlocks attached to alternate slats to maintain curtain alignment and prevent lateral slat movement.~~
  - 3. ~~Finish:~~
    - a. ~~Slats and hood galvanized steel in accordance with ASTM A 653 with rust-inhibitive, roll coating process, including 0.2 mils thick baked-on prime paint, and 0.6 mils thick baked-on polyester (powder coated) top coat.~~
      - 1) ~~Polyester Top Coat.~~
        - (a) ~~Gray polyester.~~
        - (b) ~~Tan polyester.~~
      - 2) ~~Powder coat: PowderGuard~~
        - (a) ~~PowderGuard Premium: Weather resistant polyester powder coat color as selected by the Architect.~~
    - b. ~~Non-galvanized exposed ferrous surfaces for guides, bottom bar and head plates shall receive one coat of rust-inhibitive primer.~~
  - 4. ~~Bottom Bar:~~
    - a. ~~Single primed steel angle bottom bar with weatherstrip.~~
    - b. ~~Steel tubular locking bottom bar with weatherstrip.~~
  - 5. ~~Brackets: Steel plate to support counterbalance, curtain and hood.~~
  - 6. ~~Counterbalance: Helical torsion spring type housed in a steel tube or pipe barrel.~~
  - 7. ~~Hood: Provided with intermediate support brackets as required and fabricated of:~~
    - a. ~~Galvanized primed steel.~~
  - 8. ~~Operation:~~
    - a. ~~Manual push-up.~~

9. Locking:
    - a. ~~Two point dead locks with mortise cylinder/s.~~
- B. Stainless Steel Counter Doors: Overhead Door Corporation, 651 Series.
1. Wall Mounting Condition:
    - a. Face-of-wall mounting.
  2. Curtain: Interlocking slats, Type F-158 fabricated of 22 gauge stainless steel. Endlocks attached to alternate slats to maintain curtain alignment and prevent lateral slat movement.
  3. Finish:
    - a. Slats and hood stainless steel with a No. 4 stainless steel finish.
    - b. Non-galvanized exposed ferrous surfaces shall receive one coat of rust-inhibitive primer.
  4. Bottom Bar: Single stainless steel angle bottom bar.
  5. Guides:
    - a. Stainless steel shapes.
  6. Brackets: Steel plate to support counterbalance, curtain and hood.
  7. Counterbalance: Helical torsion spring type housed in a steel tube or pipe barrel.
  8. Hood: Provided with intermediate support brackets as required and fabricated of:
    - a. Stainless steel.
  9. Operation:
    - a. Manual push up.
  10. Locking:
    - a. Two point dead locks with mortise cylinder/s.

### 2.3 OVERHEAD COILING METAL COUNTER DOORS WITH INTEGRAL FRAME

- A. Stainless Steel Counter Doors with Integral Frame: Overhead Door Corporation, 657 Series.
1. Curtain: Interlocking roll-formed stainless steel slats with a #4 finish and with endlock for curtain alignment. Slats, 22 gauge stainless steel with stainless steel tubular bottom bar with neoprene astragal.
  2. Integral Frame and Sill: Integral stainless steel frame with a #4 finish and a stainless steel sill. Frame consists of 16 gauge jambs and header, with 14 gauge sill.
  3. Counterbalance: Helical torsion spring type housed in a steel tube or pipe barrel, supporting the curtain with deflection limited to 0.03 inch (0.8 mm) per foot of span. Counterbalance shall be adjustable by means of an adjusting tension wheel.
  4. Hood: Stainless steel with a #4 finish and provided with intermediate support brackets as required.
  5. Operation:
    - a. Manual push up.
  6. Locking:
    - a. Cylinder lock.

### PART 3 EXECUTION

3.5 ADJUSTING

- A. Initial Adjustment: Adjust and check each operating item of door hardware and each door to ensure proper operation or function of every unit. Replace units that cannot be adjusted to operate as intended. Adjust door control devices to compensate for final operation of heating and ventilating equipment and to comply with referenced accessibility requirements.

3.6 CLEANING AND PROTECTION

- A. Protect all hardware stored on construction site in a covered and dry place. Protect exposed hardware installed on doors during the construction phase. Install any and all hardware at the latest possible time frame.
- B. Clean adjacent surfaces soiled by door hardware installation.
- C. Clean operating items as necessary to restore proper finish. Provide final protection and maintain conditions that ensure door hardware is without damage or deterioration at time of owner occupancy.

3.7 DEMONSTRATION

- A. Instruct Owner's maintenance personnel to adjust, operate, and maintain mechanical and electromechanical door hardware.

3.8 DOOR HARDWARE SETS

- A. The hardware sets represent the design intent and direction of the owner and architect. They are a guideline only and should not be considered a detailed hardware schedule. Discrepancies, conflicting hardware and missing items should be brought to the attention of the architect with corrections made prior to the bidding process. Omitted items not included in a hardware set should be scheduled with the appropriate additional hardware required for proper application and functionality.
- B. The supplier is responsible for handing and sizing all products and providing the correct option for the appropriate door type and material where more than one is presented in the hardware sets. Quantities listed are for each pair of doors, or for each single door.

**Hardware Schedule**

**Set 1:**

<b>3 Hinge (heavy weight)</b>	<b>T4A3386 NRP</b>	<b>US26D</b>	<b>MK</b>
<b>2 Kick Plate K1050</b>	<b>10" High CSK BEV</b>	<b>US32D</b>	<b>NO</b>
<b>1 Gasket</b>	<b>AM88BL Head &amp; Jambs</b>		<b>PE</b>
<b>1 Door Shoe Bottom</b>	<b>210 PK A</b>		<b>PE</b>
<b>1 Door Closer</b>	<b>PR7500</b>	<b>689</b>	<b>NO</b>



1 Threshold	270 series x Width, per detail	PE
1 Gasketing	2891APK	PE
1 Rain Guard	346C x full frame width, omit @- overhangs	P
1 Sweep	18061CNB	PE

Group E — Door 12  
See Section 08 36 00

Group F — Doors: 14

3 Hinge (heavy weight)	T4A3386 NRP	US26D MK
1 Latch Set	LV9465	US26D SCH
1 Cylinder	Match Facility Standard	OT
1 Kick Plate	K1050 10"H x 2" LDW CSK BEV	US32D RO
1 Door Stop	466 RKW or OH stop where floor stop — presents tripping hazard	Black RO

1 Threshold	270 series x Width, per detail	PE
1 Gasketing	2891APK	PE
1 Rain Guard	346C x full frame width, omit @- overhangs	P
1 Sweep	18061CNB	PE

Group G — Doors: 15 and 19

3 Hinge	T4A3386 NRP	US26D MK
1 Latch Set	LV9458	US26D SCH
1 Cylinder	Match Facility Standard	SCH
1 Wall Stop	406/409 as required	US26D RO
1 Perimeter Seals	S88	PE

Group H — Doors: 16, 17, 22, 33, 35

3 Hinge (heavy weight)	T4A3386	US26D MK
1 Latch Set	LV9458	US26D SCH
1 Cylinder	Match Facility Standard	OT
1 Cone Overhead Stop	6ADJ X36	689 RF
1 Door Closer	7500 S/P arm to suit location	689 NO
1 Kick Plate	K1050 10"H x 2" LDW CSK BEV	US32D RO
1 Gasketing	S88BL Width x Height	PE

Group I — Doors: 23, 24 and 26  
See Section 08 33 10

Group J — Pair Doors: 27

3 Hinge Per Door	T4A3386 NRP	US26D	MK
2 Exit Devices	CD9948 NLOP-06F 3'	US26D	VD
2 Cylinders	Match Facility Standard		SCH
2 Door Closer	PR7500	689	NO
2 Door Stops	466 RKW or OH stop where floor stop presents tripping hazard	Black	RO
2 Perimeter Seals	S88		PE
6 Silencer	608 RKW		RO

Group K — Doors: 25 and 28

3 Hinge (heavy weight)	T4A3386	US26D	MK
1 Latch Set	LV9458	US26D	SC H
1 Cylinder	Match Facility Standard		OT
1 Door Stop	466 RKW or OH stop where floor stop presents tripping hazard	Black	RO
1 Door Closer	7500 S/P arm to suit location	689	NO
1 Kick Plate	K1050 10"H x 2" LDW CSK-BEV	US32D	RO
1 Gasketing	S88BL Width x Height		PE

Group L — Doors: 18, 36, 38, 40 and 43

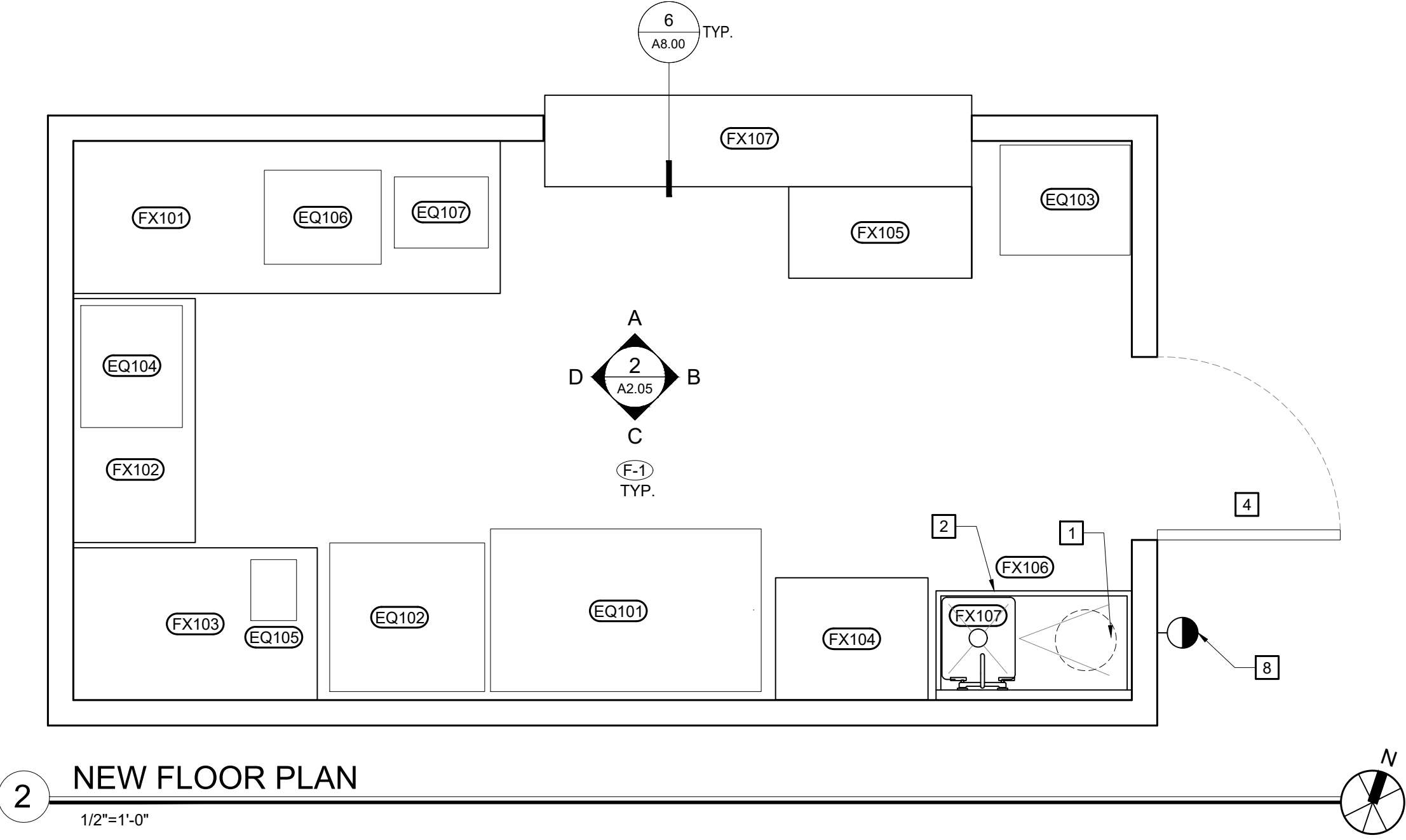
3 Hinge (heavy weight)	<b>T4A3786</b>	US26D	MK
1 Privacy Lock	49-8265 LL	US26D	SA
1 Mop Plate	K1050 4"H x 1" LDW CSK-BEV	US32D	RO
1 Kick Plate	K1050 10"H x 2" LDW CSK-BEV	US32D	RO
1 Wall Stop	406/409 as required	US26D	RO
1 Gasketing	S88BL Width x Height		PE

Group M — Pair of Doors: 37

3 Hinge (heavy weight) each door	T4A3386	US26D	MK
2 Latch Set	LV9458	US26D	SC H
1 Cylinder	Match Facility Standard		OT
1 Door Stop	466 RKW or OH stop where floor stop presents tripping hazard	Black	RO
1 Center Mullion	KR54	689	VD
1 Kick Plate	K1050 10"H x 2" LDW CSK-BEV	US32D	RO
1 Gasketing	S88BL Width x Height		PE

END OF SECTION

Fixture Name	DOOR				FRAME		PANIC HARDWARE	HARDWARE SET	CLOSER	RATED	Comments
	Nominal Size	Thk.	Material	Finish	Material	Finish					
CONCESSION DOOR	3'-0" x 6'-8"	1.75"	HM	FACT	HM	PAINT	Y	Y	Y	Y	SEE DETAILS A8.00
ROLLING CONCESSION DOOR	7'-0" x 4'-0"		ST	FACT	ST	FACT					SEE DETAILS A8.00



2 NEW FLOOR PLAN  
1/2"=1'-0"

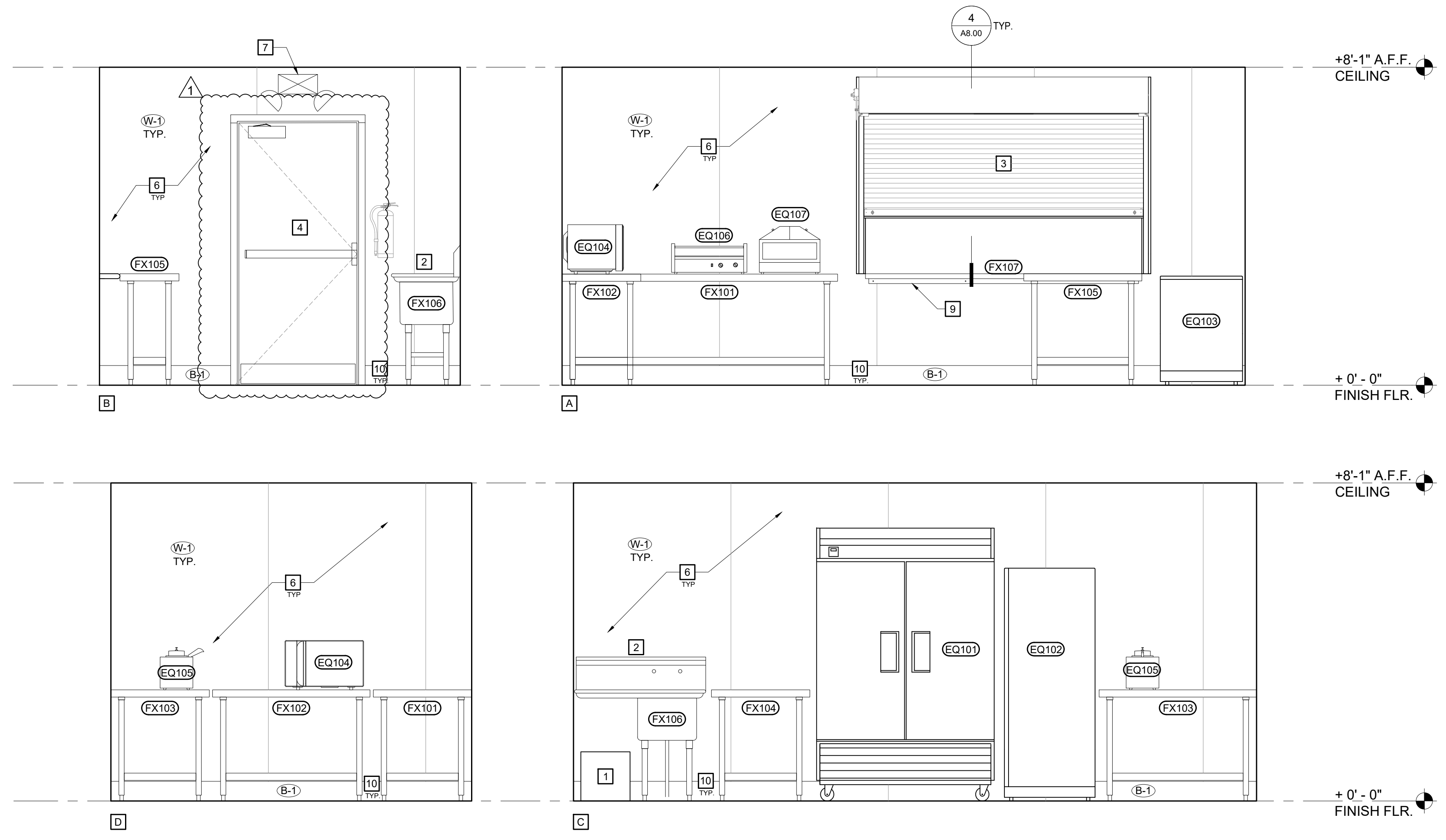
1/2"=1'-0"

		INTERIOR FINISH SCHEDULE				
		WALL	BASE TRIM	TRIM	CEILING	FLOORING
1	NORTH SIDE	(W-1) F.R.P. TO CEILING	(B-1) 6" RUBBER BASE	PAINT (P-1) MAKE #/ SEMI-GLOSS	PAINT (P-2) MAKE #/ SEMI-GLOSS	(F-1) EXISTING CONCRETE, N.I.C.
2	SOUTH SIDE					
3	EAST SIDE					
4	WEST SIDE					

ITEM	QTY.	DESCRIPTION	MANUFACTURER	MODEL
FX101	1	STAINLESS STEEL TABLE 16G - 30" x 84"	REGENCY	600TS3084S
FX102	1	STAINLESS STEEL TABLE 16G - 24" x 48"	REGENCY	600TS2448S
FX103	1	STAINLESS STEEL TABLE 16G - 30" x 48"	REGENCY	600TS3048S
FX104	1	STAINLESS STEEL TABLE 16G - 24" x 30"	REGENCY	600TS2430S
FX105	1	STAINLESS STEEL TABLE 16G - 18" x 36"	REGENCY	600TS1848S
FX106	1	STAINLESS STEEL ONE COMPARTMENT SINK WITH DRAIN BOARD - 23.5" x 38.5"	REGENCY	60S1181818XL - LEFT
FX107	1	WALL MOUNT FAUCET - 8" CENTER	REGENCY	600FW88
FX108	1	STAINLESS STEEL PASS-THROUGH SHELF 16G - 18" x 84"	REGENCY	600PTS1884

ITEM	QTY.	DESCRIPTION	MANUFACTURER	MODEL
EQ101	1	2-DOOR STANDING REFRIGERATOR	AVANTCO	178GDC49HCB
EQ102	1	17.7 CU. FT. STANDING FREEZER	WHIRLPOOL	WZF34X18D
EQ103	1	5.0 CU. FT. CHEST FREEZER	DANBY	DCF050A5WDB
EQ104	1	2.0 CU. FT. - 1200 WATTS MICROWAVE	GE	GCST20S1WBB
EQ105	1	WARMER WITH SPOUT - 3.5 QT.	CARNIVAL KING	HSPW35
EQ106	1	HOT DOG ROLLER	AVANTCO	177RG1830NS
EQ107	1	HOT DOG BUN STEAMER	AVANTCO	177HDS100

1 NEW INTERIOR CONCESSION ELEVATIONS  
1/2"=1'-0"



1 NEW INTERIOR CONCESSION ELEVATIONS  
1/2"=1'-0"

GENERAL NOTES

- CONTRACTOR SHALL VERIFY ALL DIMENSIONS & REQUIRED CLEARANCES W/ EQUIPMENT & COORDINATE W/ ARCHITECTURAL DETAILS PRIOR TO ORDERING & INSTALLATION.
- NOTIFY ARCHITECT IMMEDIATELY OF ANY DISCREPANCY IN THE FIELD

KEY PLAN NOTES

- (N) WATER HEATER TO BE REPLACED. S.P.D FOR FULL SCOPE OF WORK
- (N) SINGLE COMPARTMENT SINK WITH LEFT DRAIN BOARD TO BE INSTALLED.
- (N) CONCESSION WINDOW TO INSTALLED. SEE 3/A8.00 FOR DETAILS
- (N) DOOR TO BE INSTALLED. SEE 1/A8.00 FOR DETAILS
- (N) TABLES TO BE ATTACHED TO WALL. SEE 7/A8.00 FOR DETAIL
- WALL TO RECEIVED (N) 5/8" TYPE X GYPSUM BOARD, (N) R-19 INSULATION, AND (N) FIBERGLASS REINFORCED PLASTIC PANEL. TYP. SEE A8.00 DETAILS
- (N) EMERGENCY INTERIOR WALL SCENCE, S.E.D. FOR FULL SCOPE OF WORK
- (N) EMERGENCY EXTERIOR WALL SCENCE, S.E.D. FOR FULL SCOPE OF WORK
- (N) 16-GAUGE STAINLESS STEEL PASS-THROUGH SHELF. SEE 6/A8.00 FOR DETAILS
- (N) 6" RUBBER BASE, SEE 8/A8.00 FOR DETAILS

APPROVED FOR CONSTRUCTION:  
JULIAN DE ANDA, R.C.E. C82463 DATE  
ACTING CITY ENGINEER, CITY OF ROHNERT PARK

**STRATA** AP

ARCHITECT  
STRATA AP  
ARCHITECTURE & PLANNING  
PO BOX 1207 SONOMA, CA 95476  
T: 707.935.7944 F: 707.935.6618  
INFO@STRATAAP.COM

CONSULTANT

PROJECT



BENICIA PARK  
CONCESSION BUILDING  
FIRE REPLACEMENT  
7471 BERNICE AVENUE  
ROHNERT PARK, CA 94928

REVISIONS		
	PERMIT SUBMITTAL	07.25.2025
1	ADDENDA 01	09.03.2025
2	--	--
3	--	--
4	--	--
5	--	--

SHEET TITLE  
**NEW FLOOR PLAN & INTERIOR ELEVATIONS**

PROJECT NO.	481-25
CHECKED BY:	BM
DRAWN BY:	RT
SCALE:	AS NOTED
DATE:	02.15.25
DRAWING NO.	

**A2.05**

APPROVED FOR CONSTRUCTION:  
 JULIAN DE ANDA, R.C.E. C82463 DATE  
 ACTING CITY ENGINEER, CITY OF ROHNERT PARK

# STRATA AP

ARCHITECT  
 STRATA AP  
 ARCHITECTURE & PLANNING  
 PO BOX 1207 SONOMA, CA 95476  
 T: 707.935.7944 F: 707.935.6618  
 INFO@STRATAAP.COM

CONSULTANT

PROJECT



BENICIA PARK  
 CONCESSION BUILDING  
 FIRE REPLACEMENT  
 7471 BERNICE AVENUE  
 ROHNERT PARK, CA 94928

REVISIONS		
	PERMIT SUBMITTAL	07.25.2025
1	ADDENDA 01	09.03.2025
2	--	--
3	--	--
4	--	--
5	--	--

SHEET TITLE  
**DEMOLITION  
 EXTERIOR  
 ELEVATIONS**

PROJECT NO. 481-25  
 CHECKED BY: BM  
 DRAWN BY: RT  
 SCALE: AS NOTED  
 DATE: 02.15.25  
 DRAWING NO.

# A3.00

### GENERAL NOTES

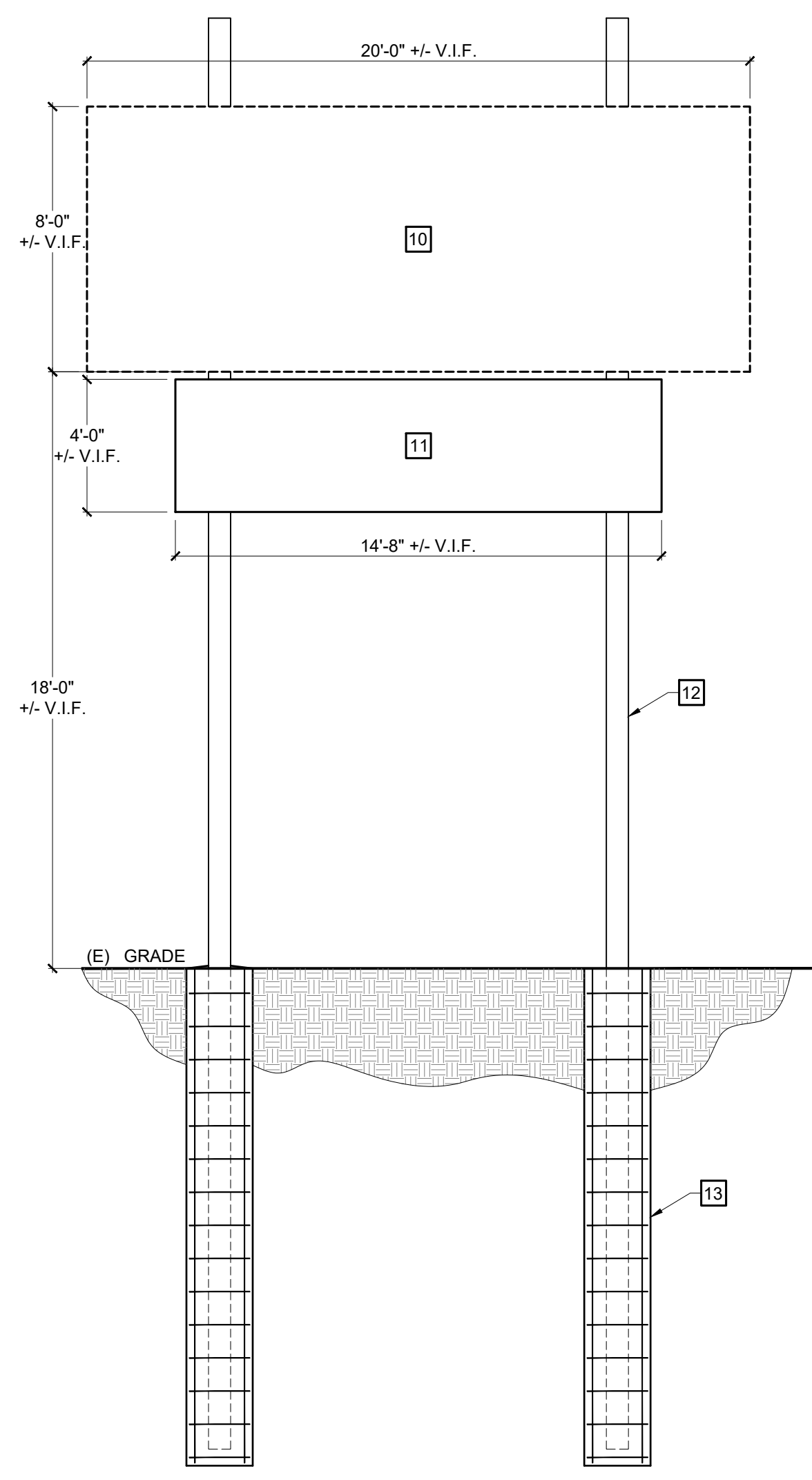
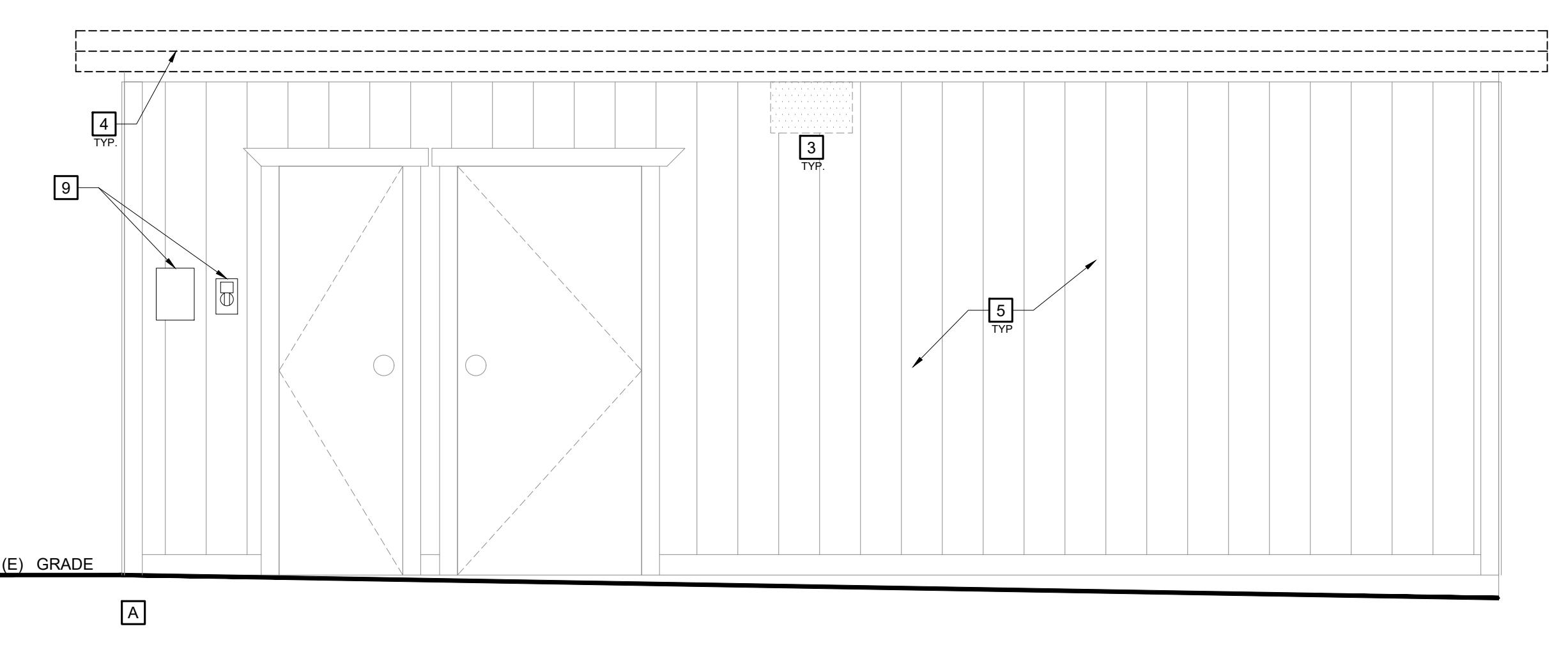
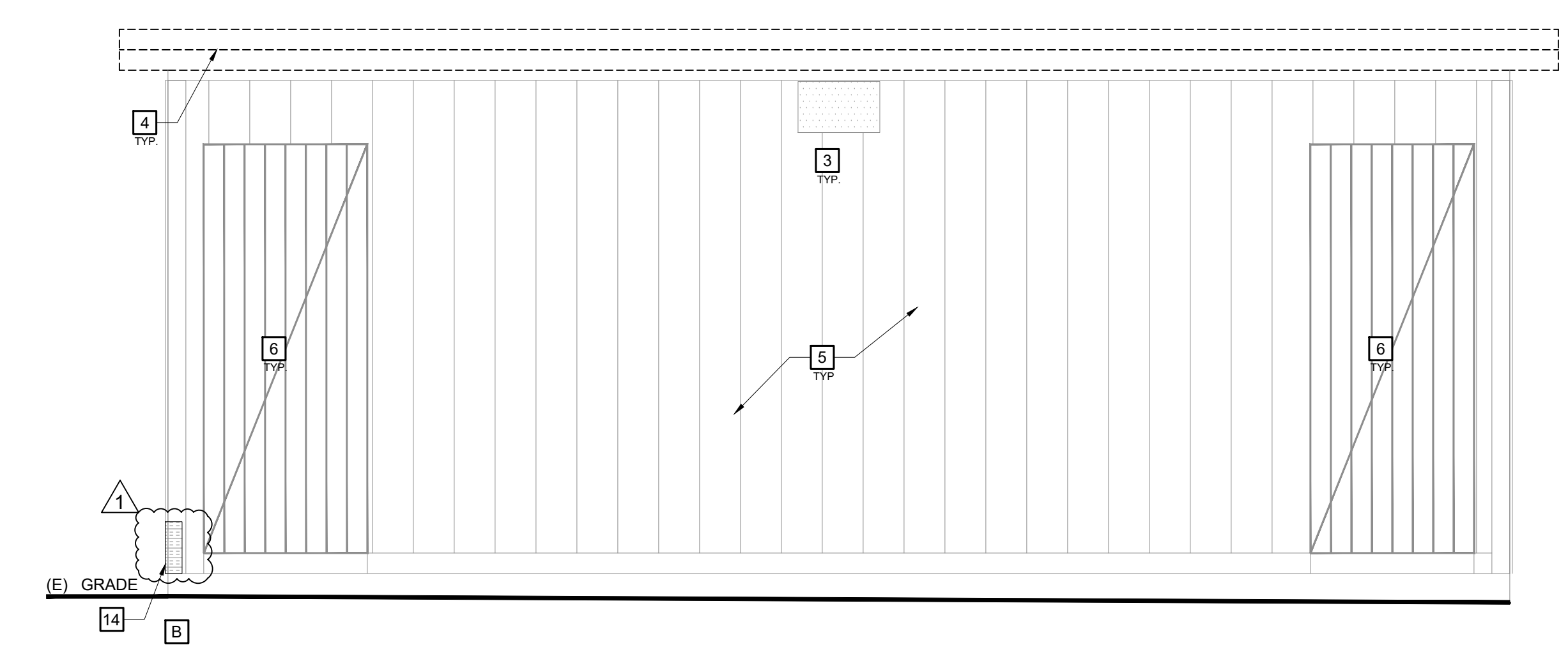
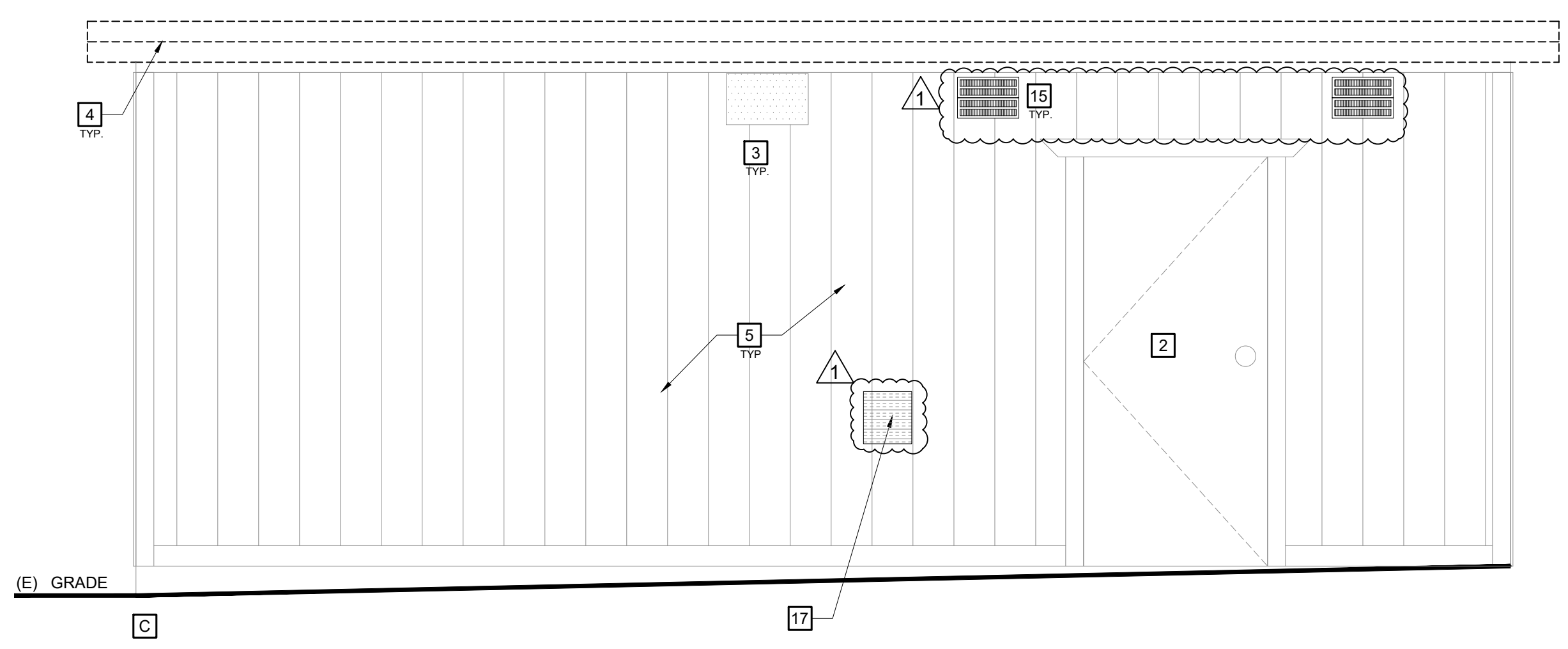
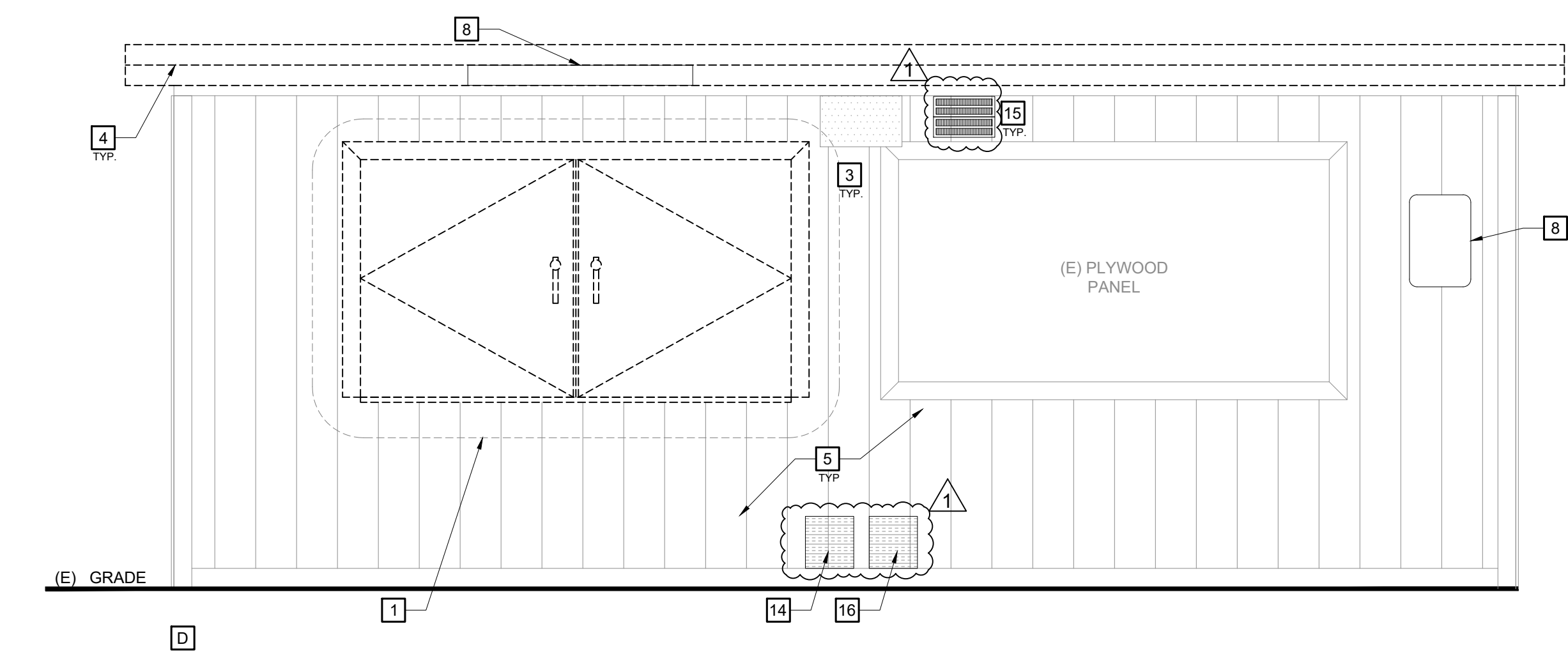
- CONTRACTOR SHALL VERIFY ALL DIMENSIONS & REQUIRED CLEARANCES W/ EQUIPMENT & COORDINATE W/ ARCHITECTURAL DETAILS PRIOR TO ORDERING & INSTALLATION.
- NOTIFY ARCHITECT IMMEDIATELY OF ANY DISCREPANCY IN THE FIELD

### KEY PLAN NOTES

- WINDOW AND COUNTER TO BE REMOVED. OPENING TO BE MODIFIED AND PREPARED FOR NEW WINDOW WITH AN ADA COMPLIANT COUNTERTOP. SEE A8.00 FOR DETAILS
- DOOR TO BE REMOVED. OPENING TO BE PREPARED FOR NEW DOOR, SEE A8.00 FOR DETAILS
- (E) LIGHT FIXTURE TO REMAIN AND TO BE PROTECTED, N.I.C.
- FASCIA TO BE REMOVED, SEE A2.04 FOR FULL SCOPE OF WORK
- SIDING AND TRIM TO REMAIN, PROTECT AND PREPARE FOR PAINT
- GRATE DOORS TO REMAIN, PROTECT AND PREPARE FOR PAINT
- DOOR TO REMAIN, PROTECT AND PREPARE FOR PAINT
- SURFACE MOUNTED SIGNAGE TO BE REMOVED, PROTECTED, AND RE-INSTALLED AFTER PAINT
- ELECTRICAL BOX AND OUTLET TO REMAIN AND BE PROTECTED
- (E) SCORE BOARD TO BE REMOVED AND REPLACED, S.S.D. FOR STRUCTURAL DETAILS.
- (E) SIGN TO BE REMOVED, PROTECTED, AND RE-INSTALLED
- (E) POST TO REMAIN, S.S.D. FOR FULL SCOPE OF WORK
- (E) PIER TO REMAIN, S.S.D. FOR FULL SCOPE OF WORK
- REMOVE AND REPLACE DRY ROT AFFECTED SIDING, TYP.
- (E) VENT COVERS TO BE REMOVED AND REPLACED IN KIND, TYP.
- (E) PLATE TO BE REMOVED AND SIDING TO BE REPAIRED
- PATCH AND REPAIR HOLES IN SIDING

### LEGEND

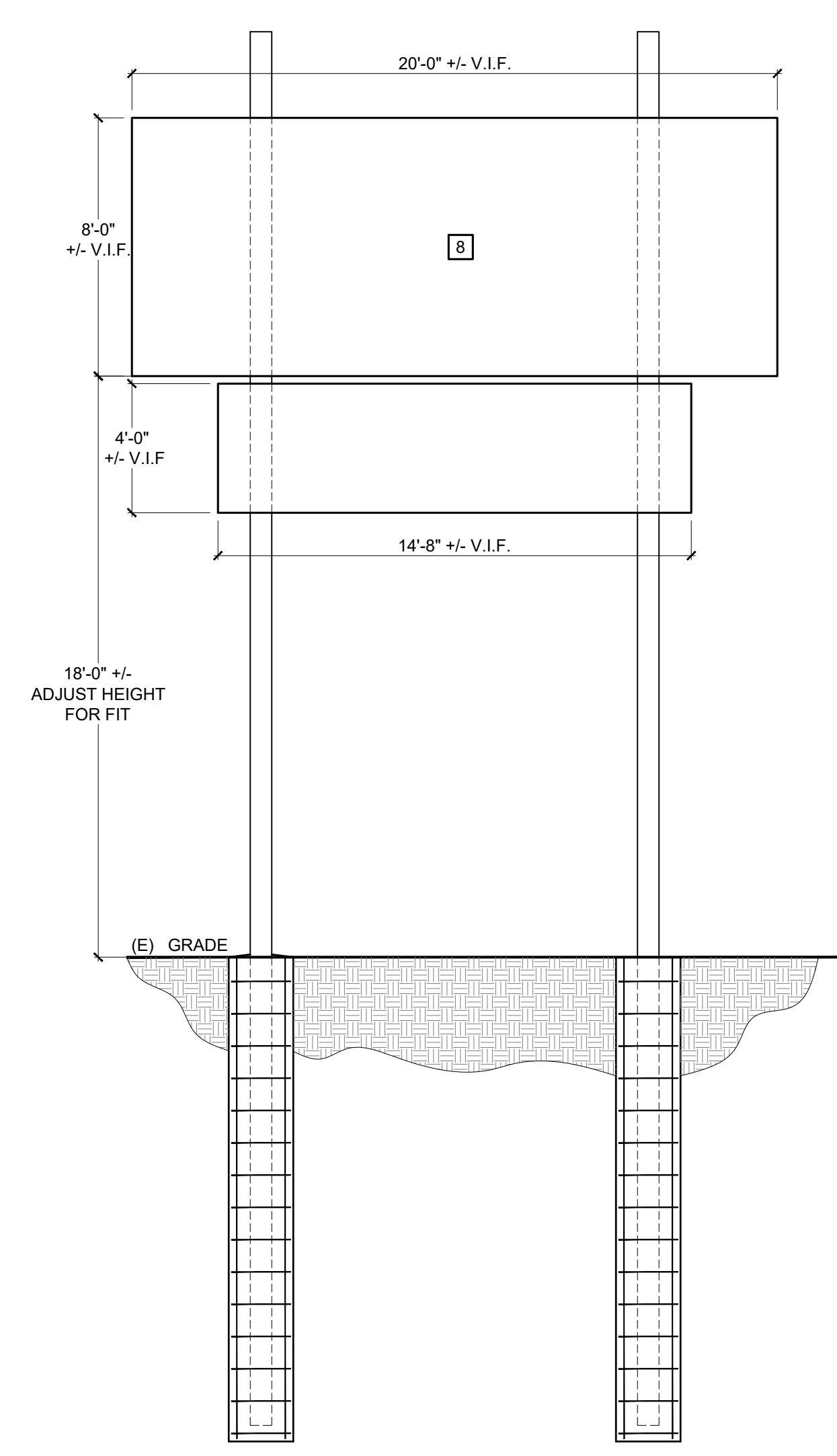
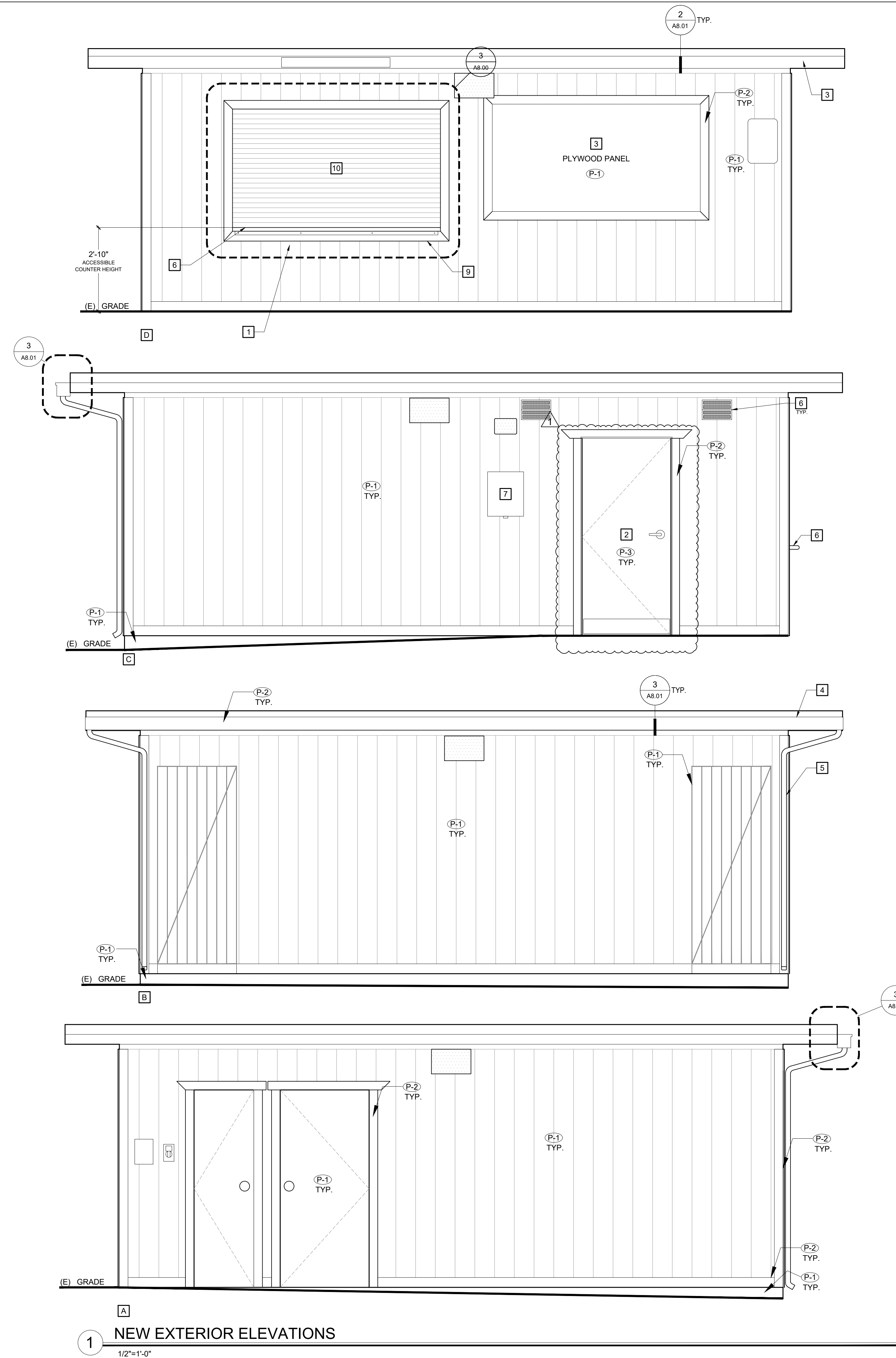
- (E) LIGHT FIXTURE TO REMAIN
- AREA OF REPAIR



2 DEMOLITION SCOREBOARD ELEVATIONS  
 1/4"=1'-0"

1 DEMOLITION EXTERIOR ELEVATIONS  
 1/2"=1'-0"

EXTERIOR FINISH SCHEDULE						
	WALL	TRIM	DOOR	PANEL	GATE	FOUNDATION
	PAINT (P-1) MAKE ## SHEEN	PAINT (P-2) MAKE ## SHEEN	PAINT (P-1) MAKE ## SHEEN	PAINT (P-1) MAKE ## SHEEN	PAINT (P-1) MAKE ## SHEEN	PAINT (P-1) MAKE ## SHEEN
1	NORTH SIDE					
2	SOUTH SIDE					
3	EAST SIDE					
4	WEST SIDE					



2 NEW SCOREBOARD ELEVATIONS  
1/4"=1'-0"

1 NEW EXTERIOR ELEVATIONS  
1/2"=1'-0"

**GENERAL NOTES**

- CONTRACTOR SHALL VERIFY ALL DIMENSIONS & REQUIRED CLEARANCES W/ EQUIPMENT & COORDINATE W/ ARCHITECTURAL DETAILS PRIOR TO ORDERING & INSTALLATION.
- NOTIFY ARCHITECT IMMEDIATELY OF ANY DISCREPANCY IN THE FIELD.

**KEY PLAN NOTES**

- (N) ROLL UP CONCESSION WINDOW. SEE A8.00 FOR DETAILS
- (N) DOOR. SEE DETAILS A8.00
- (N) 2"x10" HARDIE BOARD FASCIA OR EQUIVALENT, SEE 2/A8.00 FOR DETAILS
- (N) GUTTER. SEE 3/A8.01 FOR DETAILS
- (N) DOWN SPOUT. SEE 3/A8.01 FOR DETAILS
- (N) CONCESSION WINDOW TO INSTALLED. SEE 3/A8.00 FOR DETAILS
- (N) LOCKING ELECTRICAL PANEL BOX. S.E.D. FOR FULL SCOPE OF WORK
- (N) CITY FURNISHED SCORE BOARD SIGN MOUNTED TO EXISTING COLUMNS. CONFIRM PROPER OPERATIONS BEFORE PROJECT COMPLETION. S.S.D. FOR STRUCTURAL AND ATTACHMENT DETAILS.
- (N) 1" x 4" TRIM BOARD INSTALLED AND PREPARED FOR PAINT
- (N) 16-GAUGE STAINLESS STEEL PASS-THROUGH SHELF, SEE 7/A8.00 FOR DETAILS

**LEGEND**

- (E) LIGHT FIXTURE TO REMAIN
- AREA OF REPAIR

APPROVED FOR CONSTRUCTION:  
 JULIAN DE ANDA, R.C.E. C82463 DATE  
 ACTING CITY ENGINEER, CITY OF ROHNERT PARK

**STRATA** AP

ARCHITECT  
 STRATA AP  
 ARCHITECTURE & PLANNING  
 PO BOX 1207 SONOMA, CA 95476  
 T: 707.935.7944 F: 707.935.6618  
 INFO@STRATAAP.COM

CONSULTANT

PROJECT



BENICIA PARK  
 CONCESSION BUILDING  
 FIRE REPLACEMENT  
 7471 BERNICE AVENUE  
 ROHNERT PARK, CA 94928

REVISIONS		
	PERMIT SUBMITTAL	07.25.2025
1	ADDENDA 01	09.03.2025
2	--	--
3	--	--
4	--	--
5	--	--

SHEET TITLE

**NEW EXTERIOR ELEVATIONS**

PROJECT NO.	481-25
CHECKED BY:	BM
DRAWN BY:	RT
SCALE:	AS NOTED
DATE:	02.15.25
DRAWING NO.	

**A3.01**

APPROVED FOR CONSTRUCTION:

JULIAN DE ANDA, R.C.E. C82463 DATE  
ACTING CITY ENGINEER, CITY OF ROHNERT PARK

# STRATA<sup>AP</sup>

ARCHITECT



STRATA AP  
ARCHITECTURE & PLANNING  
PO BOX 1207 SONOMA, CA 95476  
T: 707.935.7944 F: 707.935.6618  
INFO@STRATAAP.COM

CONSULTANT

PROJECT



**BENICIA PARK  
CONCESSION BUILDING  
FIRE REPLACEMENT**  
7471 BERNICE AVENUE  
ROHNERT PARK, CA 94928

REVISIONS

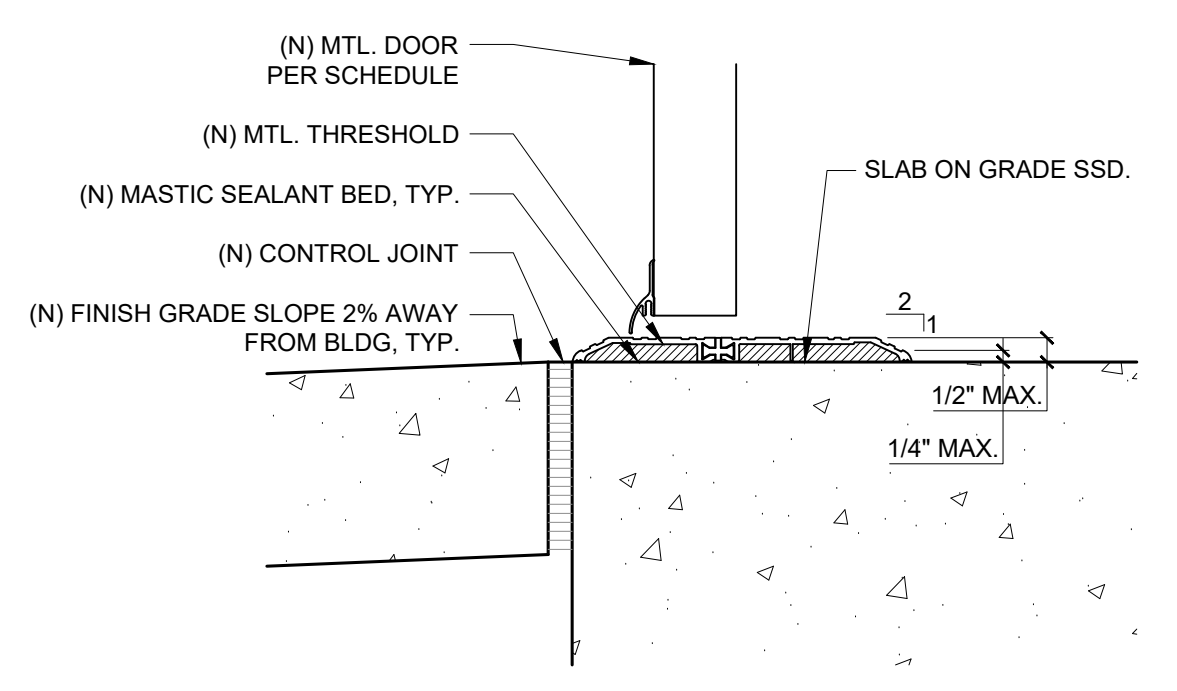
NO.	DESCRIPTION	DATE
1	PERMIT SUBMITTAL	07.25.2025
2	ADDENDA 01	09.03.2025
3	--	--
4	--	--
5	--	--

SHEET TITLE

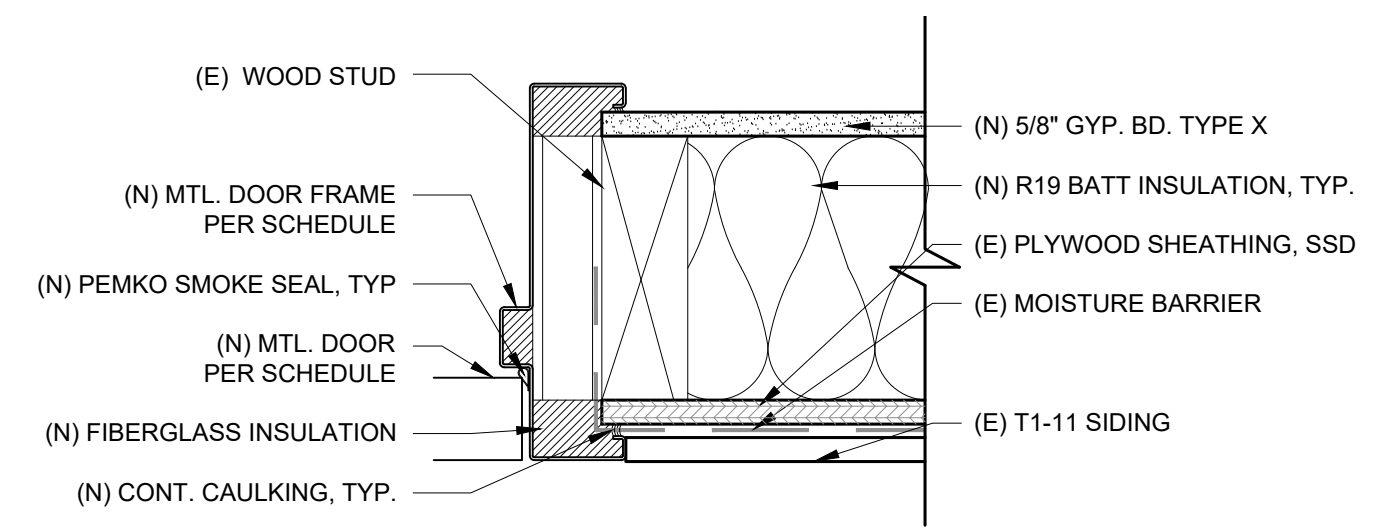
## DETAILS

PROJECT NO.	481-25
CHECKED BY:	BM
DRAWN BY:	RT
SCALE:	AS NOTED
DATE:	02.15.25
DRAWING NO.	

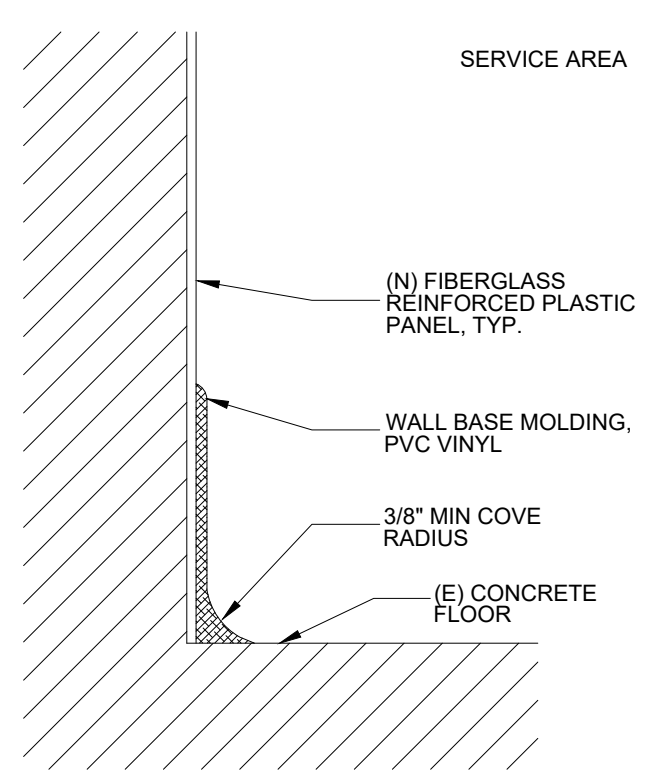
# A8.00



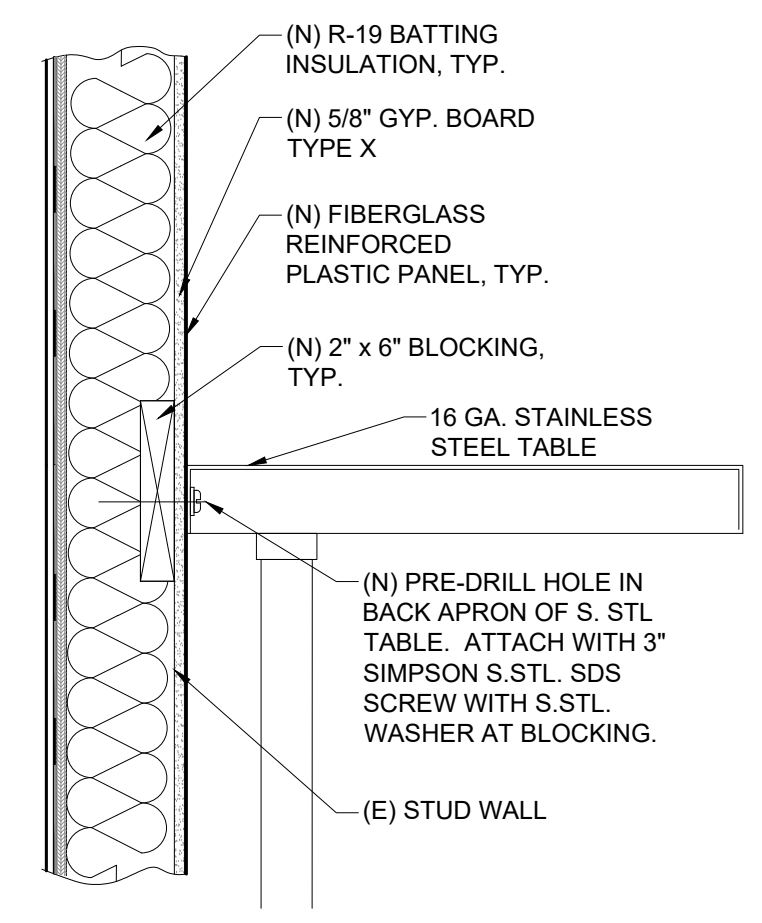
10 EXTERIOR DOOR SILL  
3"=1'-0"



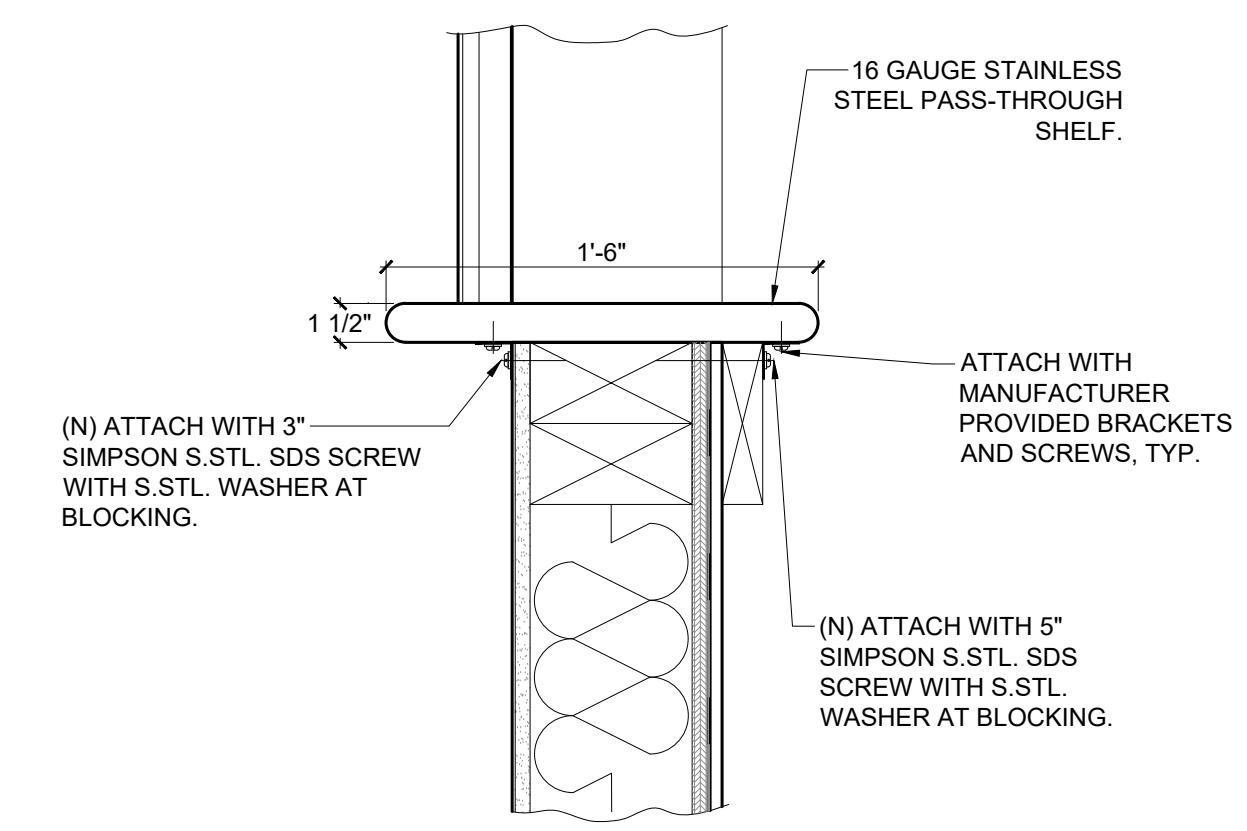
9 EXTERIOR DOOR JAMB  
3"=1'-0"



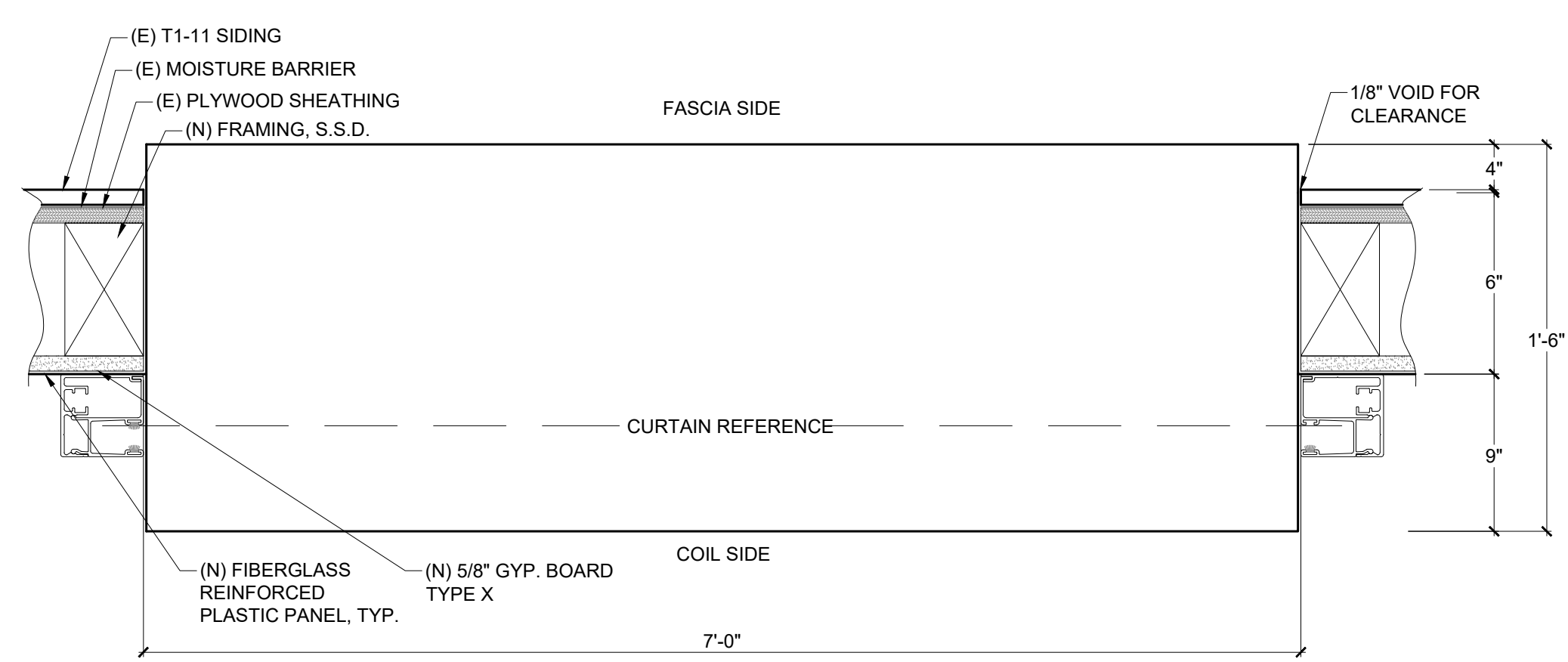
8 COVE BASE DETAIL  
N.T.S.



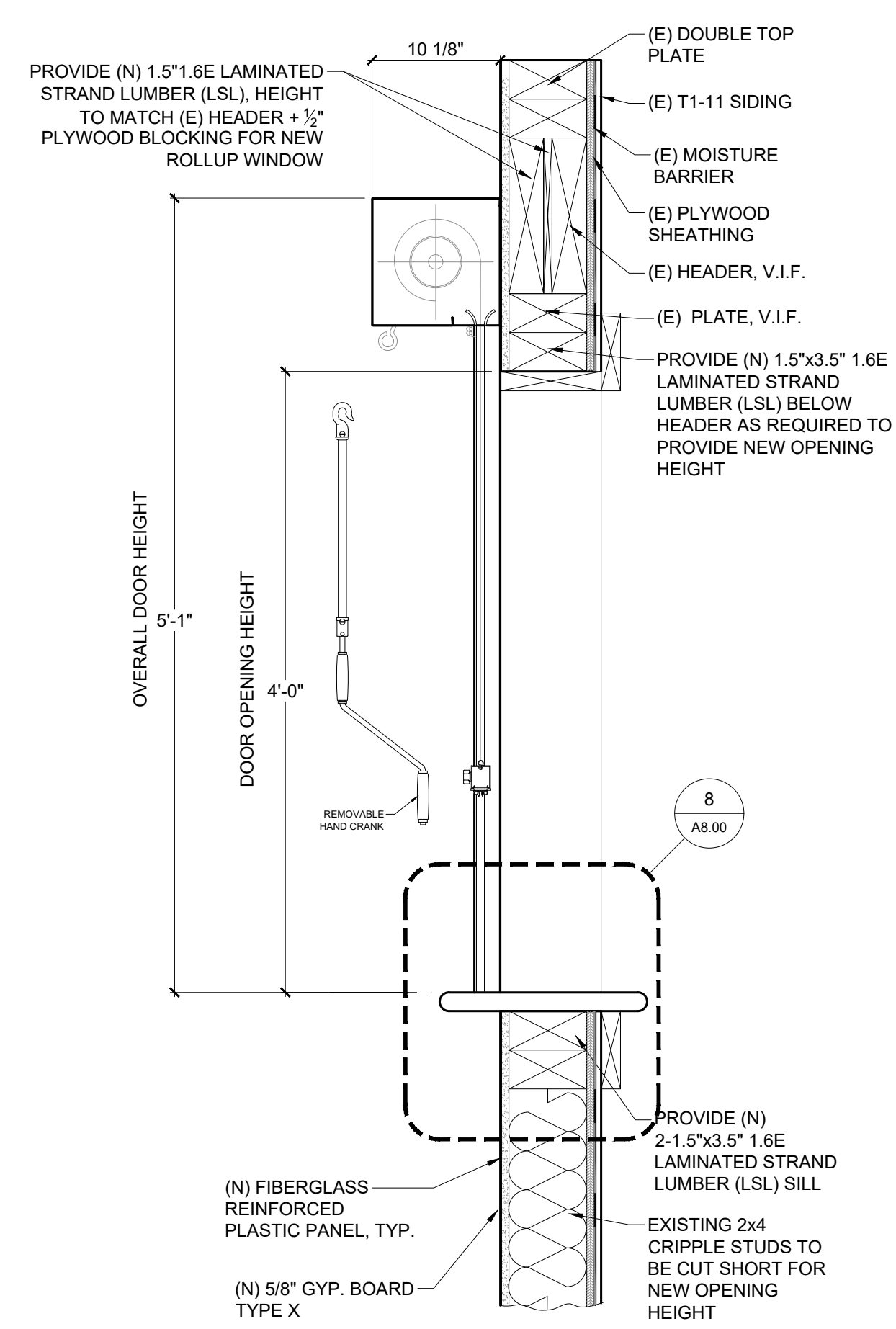
7 TABLE ATTACHMENT DETAIL  
1"=1'-0"



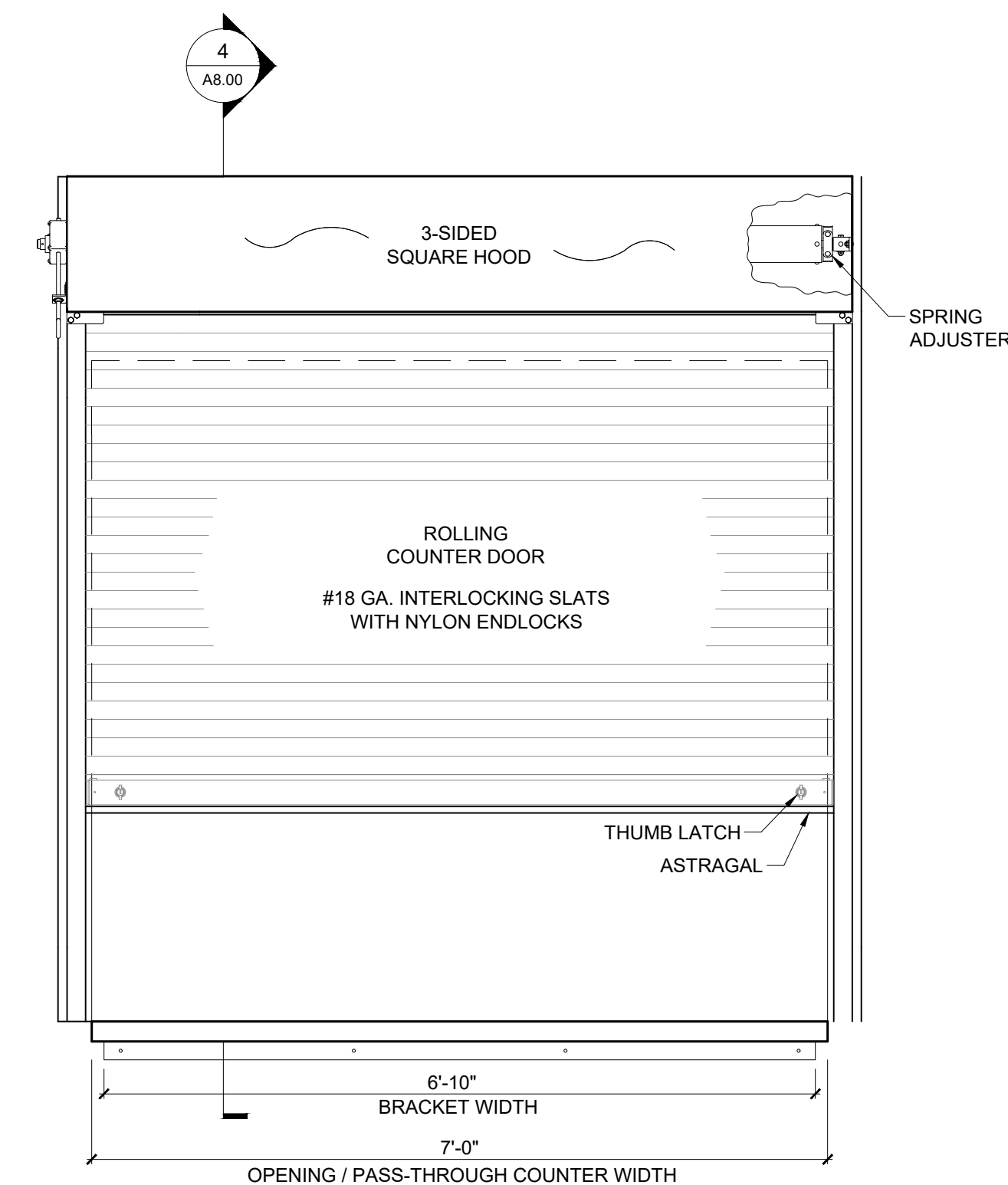
6 PASS-THROUGH SHELF DETAIL  
1 1/2"=1'-0"



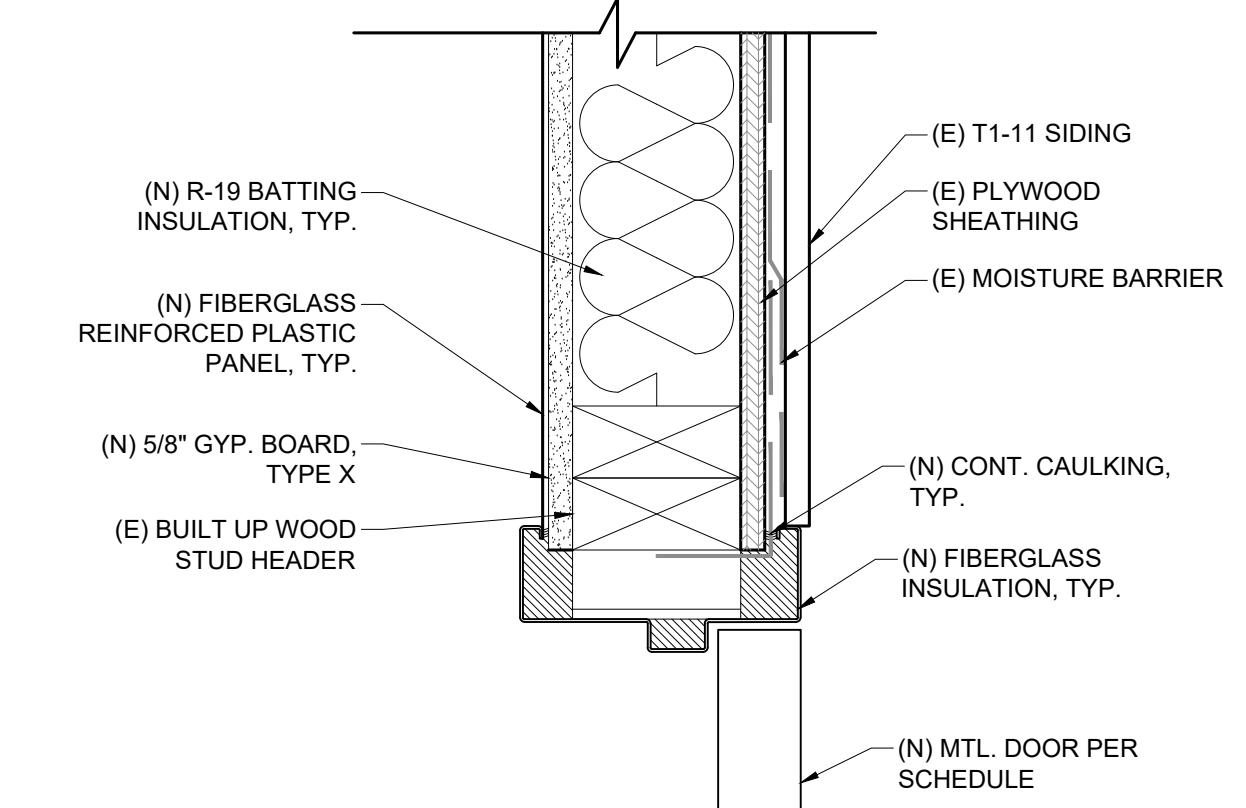
5 CONCESSION WINDOW SILL  
1"=1'-0"



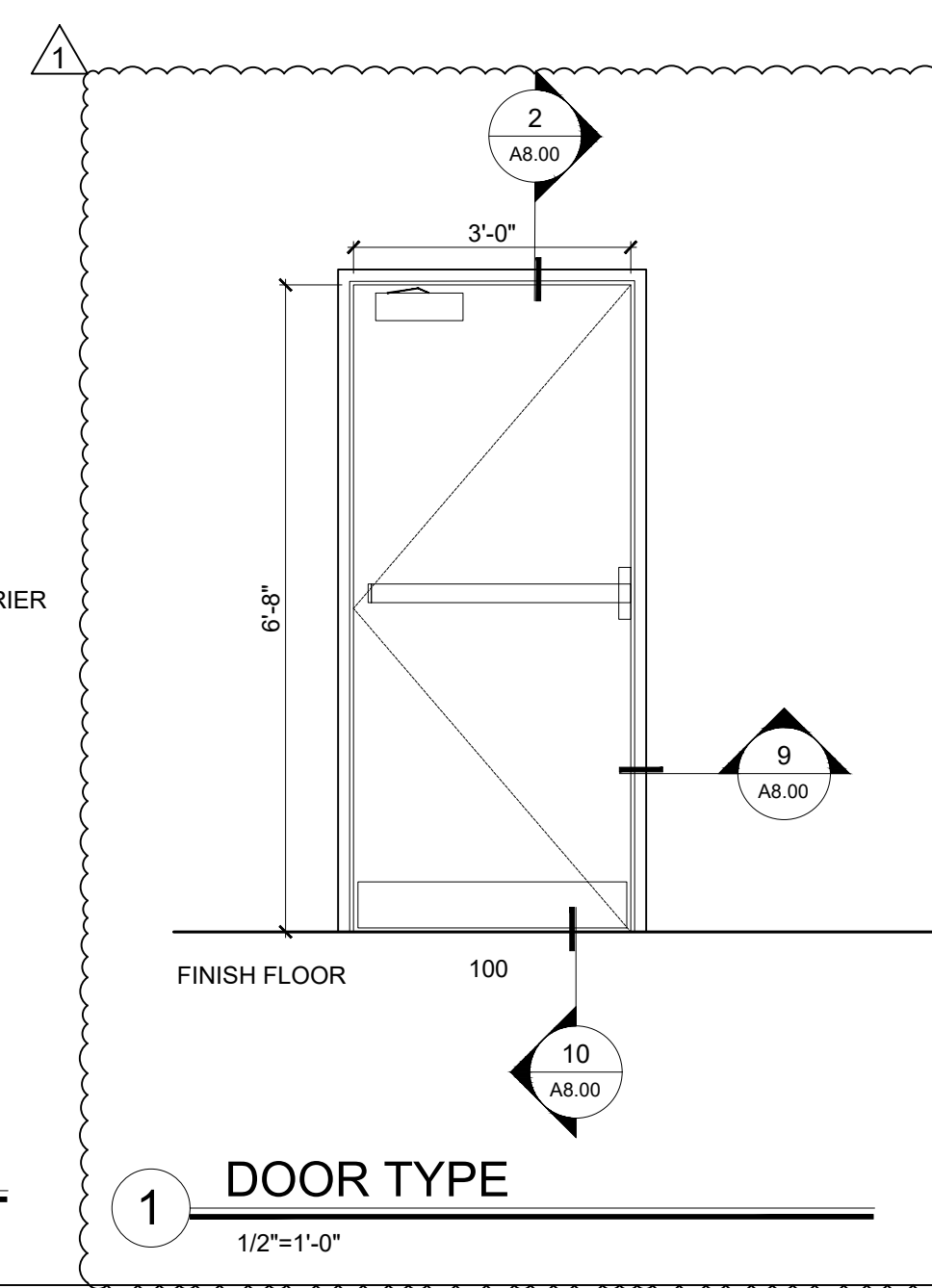
4 ROLLING DOOR SECTION  
1"=1'-0"



3 ROLLING DOOR COIL SIDE  
1"=1'-0"



2 EXTERIOR DOOR HEAD  
3"=1'-0"



1 DOOR TYPE  
1/2"=1'-0"